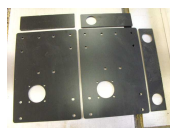


088 Vane base Y&B parts list **WARNING: Some parts may have sharp edges! vane base**



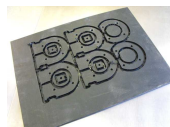
**14 xPN120**  
m4 self locking nut



**1 xPN336**  
Vane base parts, set of 5 pieces



**4 xPN123**  
m6 self locking nut



**1 xPN338**  
Mast clamp parts, set of 10 pieces



**12 xPN124**  
m6 nut



**1 xPN339,0400**  
25x22 mm carbon tube



**2 xPN132,0100**  
opaque 8x6mm plastic tube, 100 mm



**1 xPN339,0550**  
25x22 mm carbon tube



**4 xPN159,0122**  
m6x122 mm threaded rod



**8 xPN340**  
m6x50 mm bolt



**2 xPN173**  
plug for M10 nuts, set of 2 halves



**2 xPN343**  
M10x15 mm spacer



**20 xPN183**  
m6x18 mm washer



**8 xPN345**  
m4x20 mm screw



**4 xPN184**  
m10 nut



**2 xPN346**  
m4x70 mm bolt



**2 xPN185**  
m10x55 mm bolt



**12 xPN347**  
m4x8 mm washer



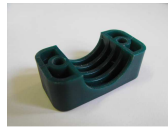
**1 xPN257**  
Pendulum axle support



**1 xPN350,1500**  
String



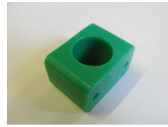
**12 xPN267**  
spacer, black plastic m8x10 mm



**8 xPN284**  
tubeclamp, half 25



**2 xPN310**  
block



**2 xPN318**  
bearing block